

[illegible]

AlphaCS-H40-MEA

1000V Liquid-Cooling System

CAPACITY

Battery Module: 52.2 kWh

40ft. DC Coupling: 500kW / Max.2351kWh

40ft. AC Coupling: 500kW&1MW / Max.2351kWh



All-in-One Design

Easily Installation

Seamless Switching (<20ms)

Easily Set Function Parameters

Intelligent liquid cooling temperature control

Various Operating Modes Available For Selection

AlphaCS-H40-MEA



Model	AlphaCS-H40-MEA-DC500	AlphaCS-H40-MEA-AC500/1000
-------	-----------------------	----------------------------

DC Parameters

Nominal Capacity	Max.2351.2 kWh
Battery Cluster Connection	Max. 10 Clusters in Parallel
Rated Voltage	748.8 VDC
Working Voltage Range	631.8~842.4 VDC
Battery Chemistry	LFP (LiFePO ₄)
Battery Cooling Type	Liquid Cooling

AC Parameters

Rated Charging and Discharging Power	500 kW	1~2*500 kW
HV DC bus voltage	LV voltage+40V ~ 900V	/
LV PV input voltage	250~800V	/
Max. PV Power	1200kW	/
AC Current	760A	
AC Frequency	50Hz/60Hz (±2.5Hz)	
On-grid/off-grid switch time	<20ms / <200ms	
Rated Grid voltage	400VAC(±15%)	

Physical Parameters

Dimensions (W x D x H)	12192 x 2438 x 2896 mm	
Ingress Protection	IP54	
Product Type	Outdoor (Container)	
Fire-Fighting System	Aerosol	
System Weight	40 t	42.5 t

Battery Parameters

Battery Model	M166314-52S-EX
Rated Voltage	166.4 V
Nominal Capacity	52.2 kWh
Rated Charging and Discharging Power	26.1 kW (0.5 P)
Ingress Protection	IP67
Weight	340 kg
Dimensions (W x D x H)	810 x 1125.5 x 237.5 mm
Operating Temperature Range	-30 °C ~ 50 °C*

Certification

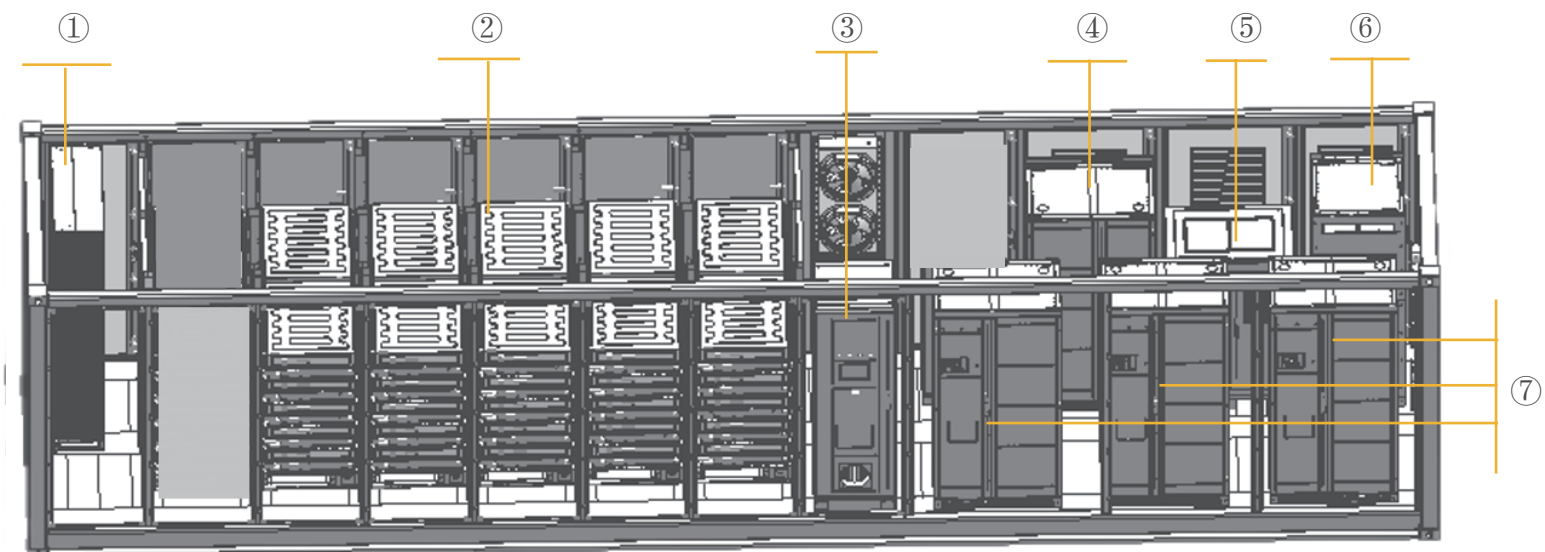
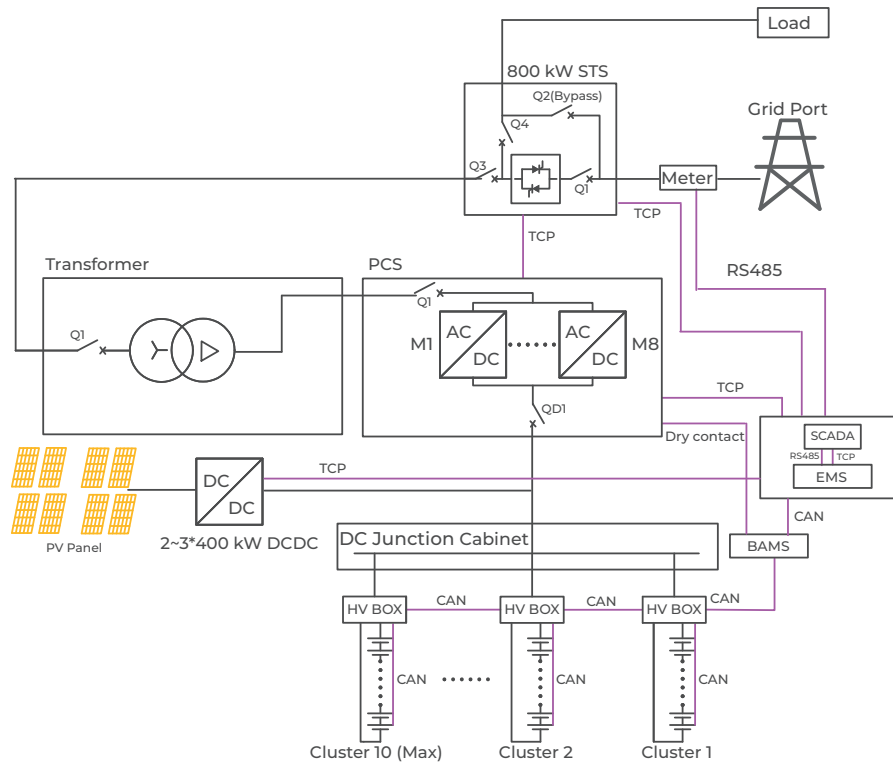
Safety	UN38.3,UN3536, IEC 62619, IEC 62477, IEC 61000, UL9540A
--------	---

*The optimum temperature range is 15~35 °C. If the ambient temperature is too high or too low, the battery performance may deteriorate.

AlphaCS-H40-MEA-DC500

TOPOLOGY DIAGRAM

DC-Coupling Solution

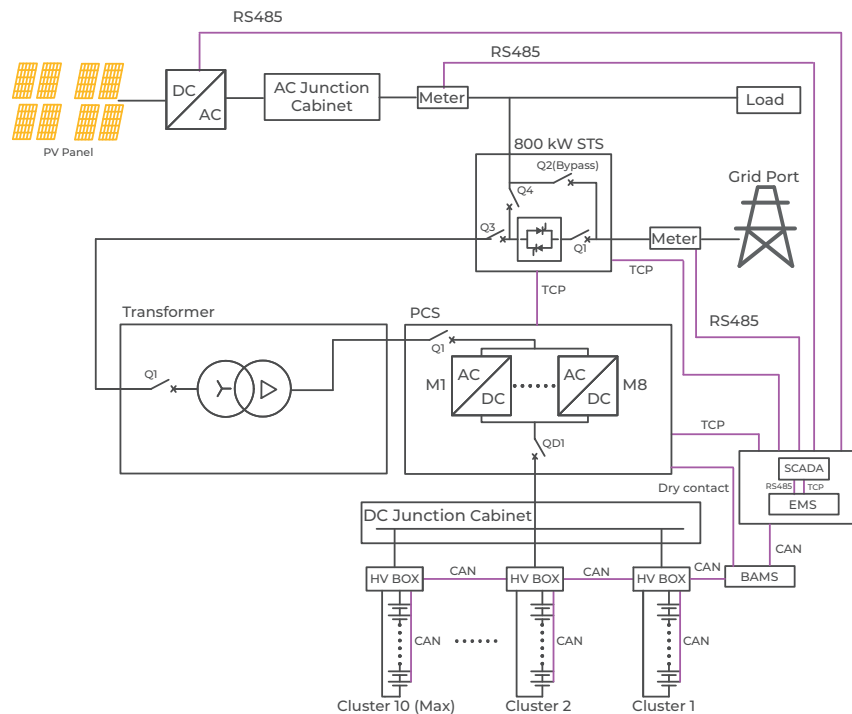


- ①: Liquid cooling unit
- ②: Battery Cluster
- ③: DC junction Cabinet
- ④: PCS
- ⑤: Transformer
- ⑥: STS
- ⑦: DCDC

AlphaCS-H40-MEA-AC500

TOPOLOGY DIAGRAM

AC-Coupling Solution

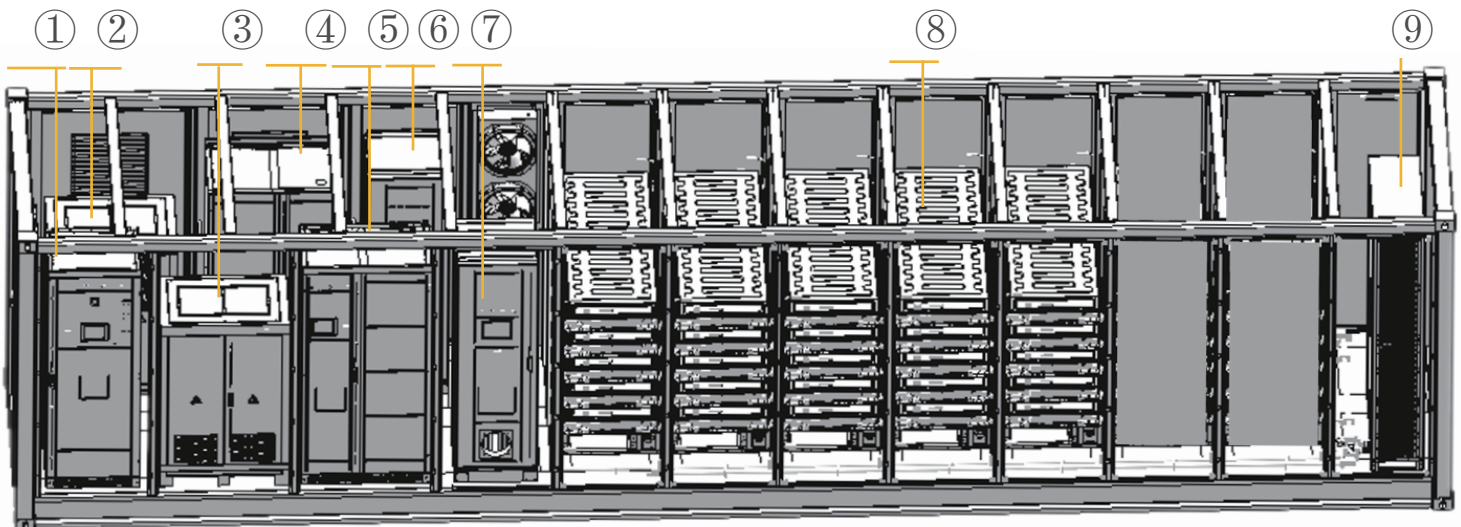
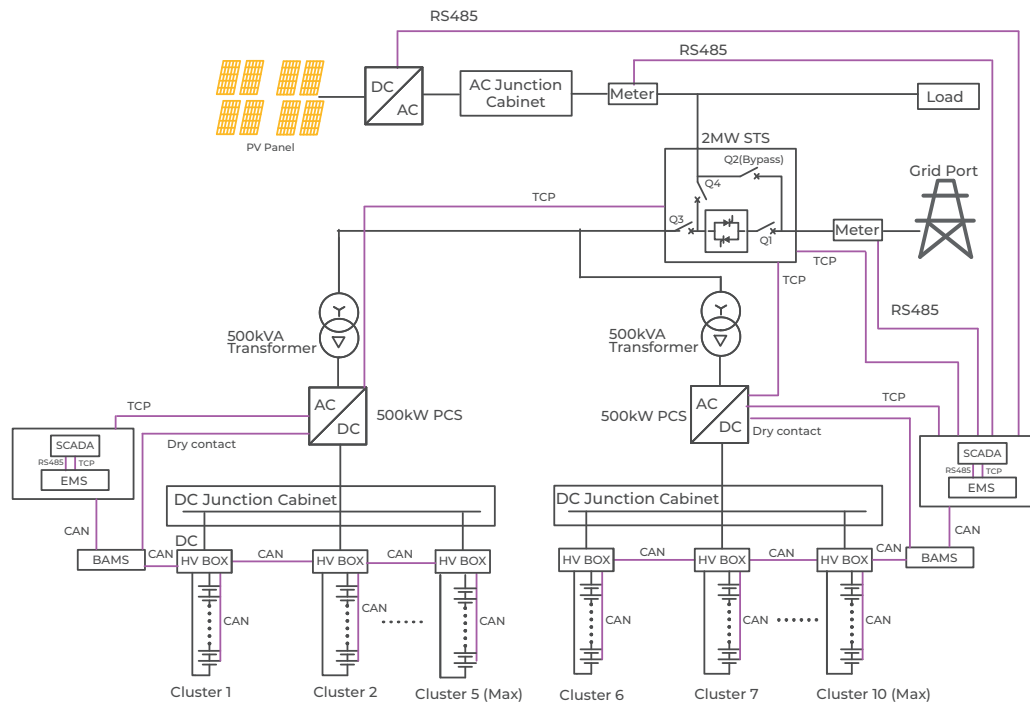


- ①: STS
- ②: Transformer
- ③: PCS
- ④: DC junction Cabinet
- ⑤: Battery Cluster
- ⑥: Liquid cooling unit

AlphaCS-H40-MEA-AC1000

TOPOLOGY DIAGRAM

AC-Coupling Solution



- ①: STS
- ②: Transformer
- ③: Transformer
- ④: PCS
- ⑤: PCS
- ⑥: DC junction Cabinet
- ⑦: DC junction Cabinet
- ⑧: Battery Cluster
- ⑨: Liquid cooling unit

Equipment Parameter



PCS		
Model	PWS1-500KTL-CN	
Battery Voltage Range	600 ~ 900 V	
Max. Charging / Discharging Current	873 ADC	
Nominal Power	500 kW	
Rated Voltage	400 V	
Grid Voltage Range	340 ~ 460 V, 3L / N / PE	
Power Factor Range	0.99 / -1 ~ 1	
Rated Output Frequency	50 / 60 Hz	
Dimensions (W×D×H)	1100×800×2160 mm	
Rated AC Current	760 A	
Transformer		
Model	PWT-500K	
Rated Capacity	500kVA	
Input Voltage	380V	
Output Voltage	400V	
Group of Connections	Dyn11	
Insulation Class	H	
No-Load Current	5%	
Full-Load Efficiency	≥99.17%	
Ambient Temperature	-25 ~ 50℃	
Weight	1580 kg	
Dimension (W×H×L)	1100×800×2160 mm	
STS		
Model	PWD_800K	PWD_2000K
Rated Capacity	800 kW	2000 kW
Rated Voltage	400 V	400 V
Input Voltage Range	-15% ~ 15%	-15% ~ 15%
Output Voltage Range	-15% ~ 15%	-15% ~ 15%
Nominal Current	1154 A	3039 A
AC Frequency	50Hz / 60Hz±2.5Hz	50Hz / 60Hz±2.5Hz
Switching Time Gap	≤20 ms	≤200 ms
Ingress Protection	IP20	IP20
Wiring Mode	Three Phase, 4 Wires	Three Phase, 4 Wires
Max. Efficiency	99.5% (Full Load)	99.5% (Full Load)
Cooling Method	Forced Air Cooling	Forced Air Cooling
Dimensions (W×H×L)	800×800×2160 mm	800×800×2160 mm
Weight	450 kg	600 kg
Altitude	3000 m	3000 m

Equipment Parameter



DCDC	
Model	PDS1_400K
HV DC Bus Voltage	LV voltage+40V ~ 900
HV DC Bus Current	0~130A×8
LV PV Input Voltage/Battery Voltage	250~800V
LV PV Input Current/Battery Current	0~130A×8
Power Rating	50kW×8
Ingress Protection	IP20
Weight	Cabinet 280kg + Module 40kg*n (n=1,2,...,8)
Dimension (W×H×L)	1100×2160×800 mm
Altitude	3000 m
PV Inverter (Adjust for specific projects)	
Model	SG125CX-P2
Recommended max. PV input power	175 kW
Max. PV input voltage	1100 V
Min. PV input voltage / Startup input voltage	180 V / 200 V
Rated PV input voltage	600 V
MPPT voltage range	180 V – 1000 V
Max. PV input current	360 A (30 A * 12)
Rated AC output power	125 kW
Max. AC output current	181.1 A
Rated AC voltage	3 / N / PE, 230 V / 400 V
AC voltage range	320 V – 480 V
Rated grid frequency	50 Hz / 60 Hz
Cooling method	Smart forced air cooling
Ingress Protection	IP66
Weight	89.5kg
Dimension (W×H×D)	1020×795×360 mm
Altitude	4000 m

Alpha ESS Co., Ltd.

+86 513 8060 6891
info@alpha-ess.com
www.alphaess.com
No. 1086 Bihua Road, Tongzhou
District, Nantong City, Jiangsu
Province, China

Alpha ESS International Pte. Ltd.

+65 6513 1125 / +65 6513 1126
Singapore@alpha-ess.com
2 Corporation Road #01-06A
Corporation Place 618494 Singapore

Alpha ESS USA, Inc.

inquiry@alphaess.us
www.alphaess.us
2180 S Ivanhoe St. Unit 5
Denver.CO 80222 USA

Alpha ESS South Africa (Pty.) Ltd.

measervice@alpha-ess.com
Johannesburg, South Africa